

DK05

Asansör Yarı Otomatik Kapı Kilidi

Interlock for Elevator Semi Automatic Door

Form no: F32-3-R3

TR MONTAJ ve BAKIM KILAVUZU

ENG INSTALLATION AND MAINTENANCE MANUAL

AR كتيب التركيب

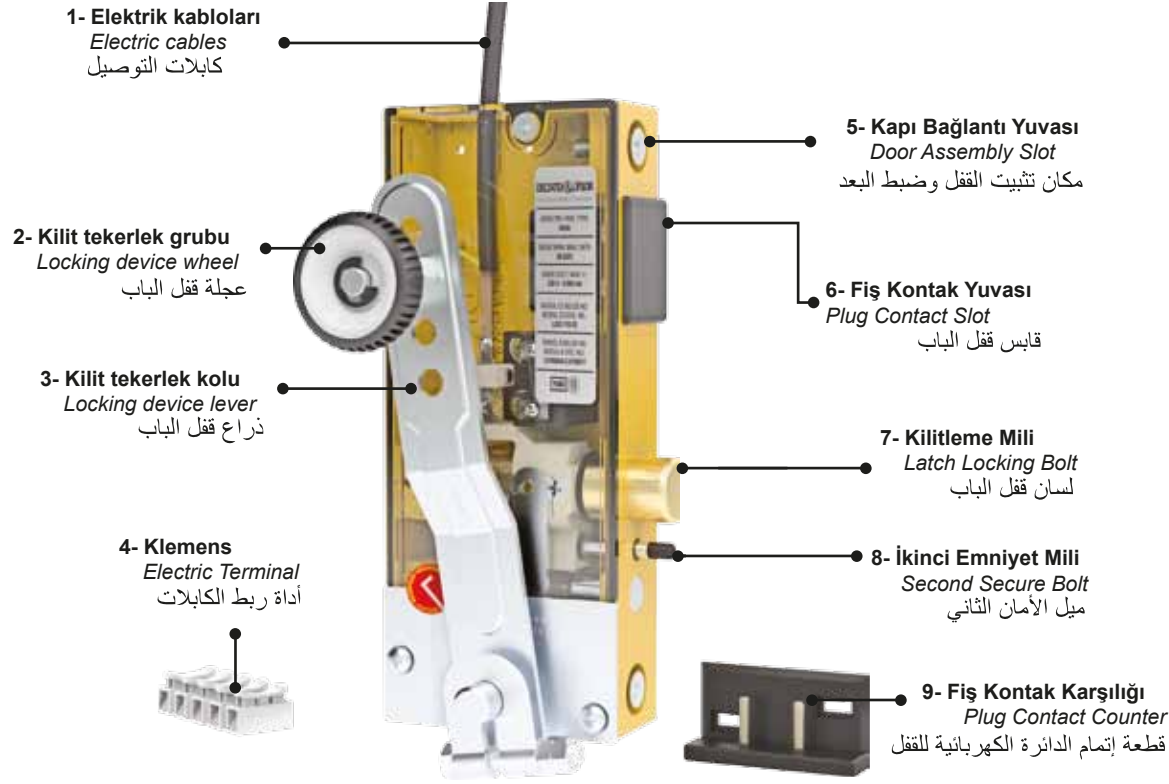
TSEK



deltatek.com.tr
deltatekelevator.com.tr



DELTA TEK & LİFSOR
High Quality Elevator Components



- Her hakkı saklıdır. Tüm fotoğraflar DELTATEK ASANSÖR SAN. TIC. LTD. ŞTİ. firmasına aittir. Bu dokümantasyonun tamamı veya bir kısmı kopyalanamaz, değiştirilemez veya başka bir dile tercüme edilmez. DELTATEK ASANSÖR SAN. TIC. LTD. ŞTİ., özellikle elektronik sistemleri kullandıkları bu belgelerin işlenmesini, çoğaltılmasını veya saklanmasını kabul etmez. All rights reserved. All photos are property of DELTATEK ASANSÖR SAN. TIC. LTD. ŞTİ.. This documentation may not be copied, modified or translated into any other language in whole or in part. Especially when using electronic systems, DELTATEK ASANSÖR SAN. TIC. LTD. ŞTİ., have to agree to processing, duplication or storage of this documentation.

BAKIM TALİMATI

Tüm hareketli parçalar gres yağı ile yağlandığı için normalde bakım yapılmasına gerek yoktur. Düzenli bakım dönemlerinde şunları öneriyoruz:

1. Toz ve kirliliğin gideriniz.
2. Sabitleme vidalarının sıkı bir şekilde sıkıldığını kontrol ediniz.
3. Tekerlek ve kolundaki sabitleme vidalarının sıkı olup olmadığını kontrol ediniz.
4. Gevşek olan elektrik kablolarını klemense tekrar sıkıca bağlayınız. Klemensin arızalı olduğunu tespit ederseniz kesinlikle değiştiriniz.
5. Kilitleme ve ikinci emniyet milinin yağı eskimişse gres yağı sürünüz.

MAINTENANCE INSTRUCTIONS

Normally there is no maintenance necessary, because all moving bolts are provided with lubricants. In extreme operating conditions we suggest in regular inspection periods:

1. The removal of rough contamination.
2. To check that the fastening screws are tightly fastened.
3. To check that the screw at the roller and roller's lever is tightly fastened.
4. To retighten terminals for electrical cables. If you find that the terminal is defective, definitely replace it with a new one.
5. To lubricate again, if the lubricants have become ineffective.

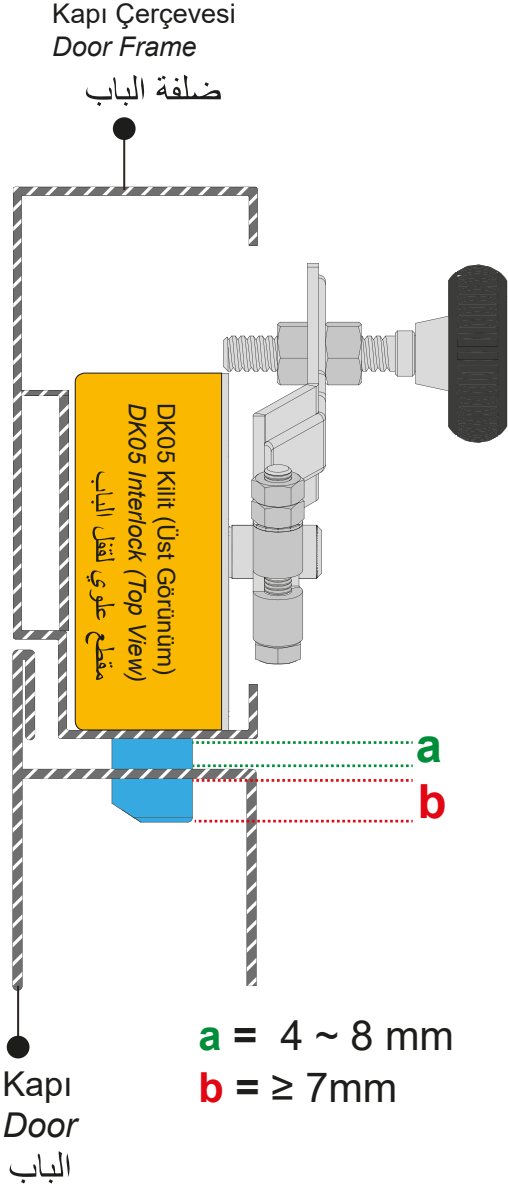
تعليمات الصيانة

القطع المتحركة بالقفل تم تشحيمها من المصنع لذلك لإداعي لإضافة الزيوت خلال فترة الصيانة الدورية نوصي بمايلي تأكد من إحكام براغي تثبيت القفل تحقق من البراغي والصامولات الموجودة على عجلة الذراع و ذراع القفل إذا كانت مشدودة أم لا إعادة توصيل الكابلات السائبة إن وجدت وفي حال تلف أداة ربط الكابلات قم باستبدالها بأخرى جديدة أضف الشحم على لسان القفل وميل الأمان الثاني عند الحاجة لذلك

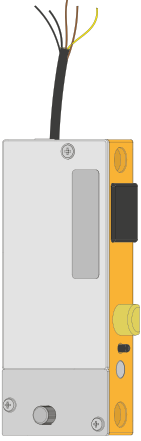
KİLİTLEME DİLİNİN ÖLÇÜ TANIMI

DEFINITION OF LATCH BOLD DIMENSION

مقاسات لسان قفل الباب

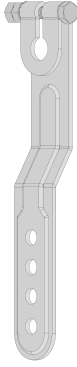


KUTU İÇERİĞİ | BOX CONTENTS | محتوى العلبة



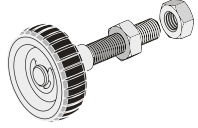
- (TR) Kapı Kilidi
(ENG) Door Interlock
(AR) قفل الباب

X1



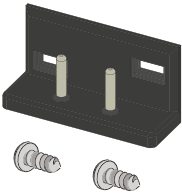
- (TR) Tekerlek Kolu
(ENG) Roller Lever
(AR) ذراع قفل الباب

X1



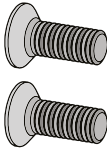
- (TR) Tekerlek ve Civatası
(ENG) Roller and Bolt
(AR) عجلة ذراع القفل

X1



- (TR) Kapı Kontak Kolu
(ENG) Door Contact Lever
(AR) ذراع توصيل القفل

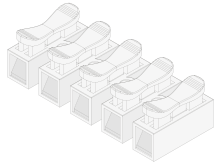
X1



M5x15HB

- (TR) Bağlantı Vidası
(ENG) Door Contact Bolt
(AR) براغي التثبيت

X2





- (TR) Klemens
(ENG) Terminal Block
(AR) أداة ربط الكابلات

X1

AB UYGUNLUK BEYANI**EU DECLARATION OF CONFORMITY FOR SAFETY COMPONENTS FOR LIFTS**

İmalatçı / Manufacturer:	DELTATEK ASANSÖR LTD. ŞTİ. SAN. TİC.
Firma / Company:	DELTATEK ASANSÖR LTD. ŞTİ. SAN. TİC.
Adres / Adress:	İmes Sanayi Sitesi C/308 Sokak No.: 6 Yukarı Dudullu Ümraniye İstanbul -TÜR.
Fabrika / Factory:	İmes Sanayi Sitesi C/308 Sokak No.: 6 Yukarı Dudullu Ümraniye İstanbul -TÜR.
Yetkili Kişi / Authorised Representative:	Ahmet GÜL ERBOZ
Tip / Type:	DK-05
Seri No / Serial Number:	ETİKET ÜZERİNDE BELİRTİLMİŞTİR. (2024 YILINDA ÜRETİLEN HER ÜRÜN İÇİN) GIVEN ON PRODUCT LABEL (ALL PRODUCTS WHICH MANUFACTURED IN 2024)
Üretim Tar. / Prod. Date:	2024

Uygunluk Değerlendirme Prosedürü / Conformity Assessment Procedures

Rasgele Kontrol ile Tip Uygunluğu (Modül C 2) Sertifika Numarası / Conformity to Type with Random Checking (mod. C 2) Certificate number:	LS/C-112/24
AB Tip Test Sertifika Numarası (Modül B) EU-Type Examination (module B) Certificate Number :	LF/KSA/A-C-0180/17
C2 Modül / C2 Module:	GCN TURK  2729
B Modül / B Module:	MIRTEC  0437

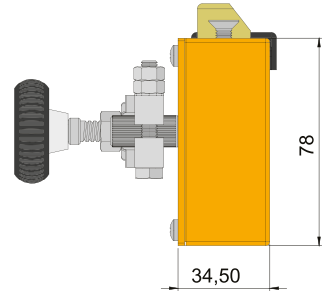
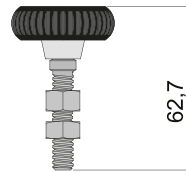
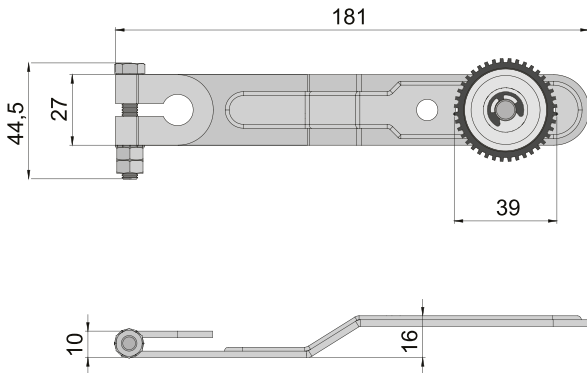
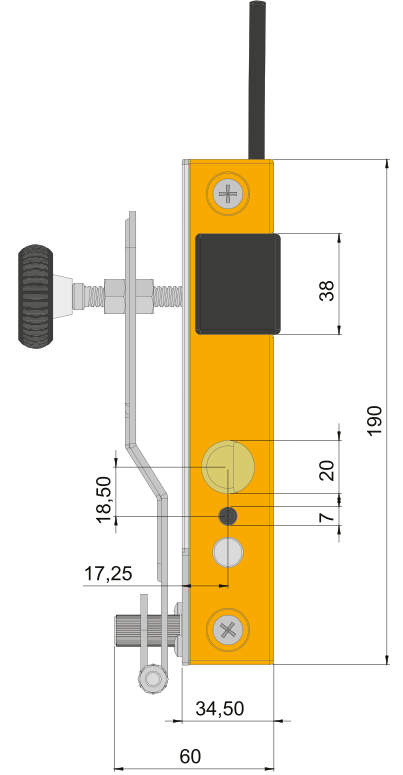
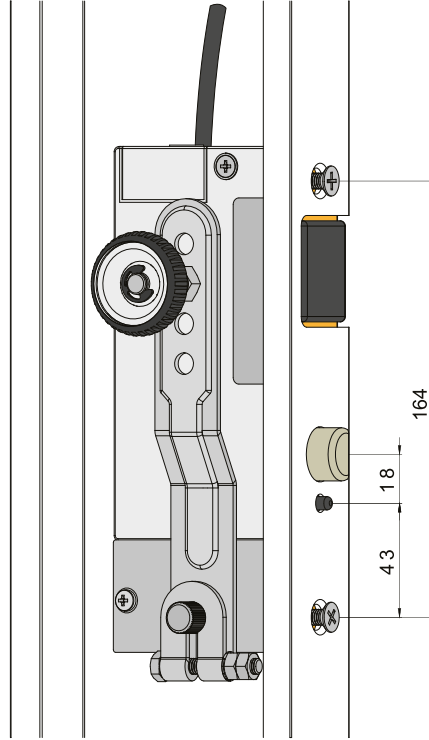
Üretimi yapılan güvenlik bileşeninin aşağıdaki yönetmelik ve standartlara uygunluğunu beyan ederiz. / We hereby confirm that the safety component complies with the following directives and harmonized standards:

Asansör Yönetmeliği / Elevator Norms:	2014/33/EU	Lifts Directive
	EN 81-20:2020	Safety rules for the construction and installation of lifts – Lifts for the transport of persons and goods – Part 20: Passenger and goods passenger lift
	EN 81-50:2020	Safety rules for the construction and installation of lifts – Examinations and tests – Part 50: Desing rules, calculations, examinations and tests of lift components

Firma Kaşe, İmza / Company Stamp, Signature

DK05 KAPİ KİLİDİ ÖLÇÜLERİ | DK05 DOOR INTERLOCK DIMENSIONS | مقاسات قفل الباب

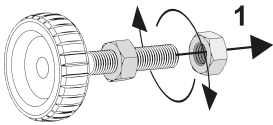
Ölçüler mm cinsindedir. / Dimensions are in mm. / وحدة القياس المستخدمة هي ملم



KAPI KİLİDİ MONTAJI | INTERLOCK ASSEMBLY |

طريقة تركيب قفل الباب

1

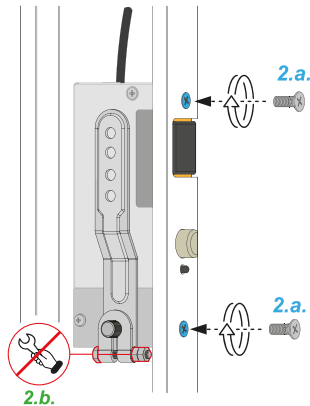


(TR) Tekerlek civatası üzerindeki 2 adet M8 somunu sökünüz.

(ENG) Unscrew the 2 pieces M8 nuts on the wheel bolt.

(AR) قم بفك الصامولة الموجودة على عجلة الذراع

2

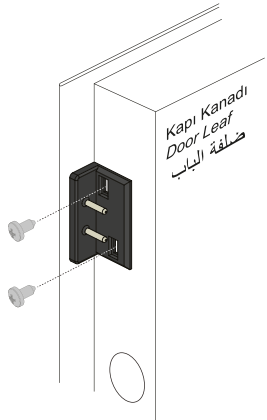


(TR) Kapı kilidini, kapı çerçevesindeki yerine vidalar ile sabitleyiniz.(2.a.) Ardından tekerlek kolunu kilit üzerindeki mile takınız. (2.b.) Fakat sabitleme somunlarını henüz sıkmayınız!

(ENG) Fix the interlock in place on the door frame with screws. (2.a.) Plug the roller lever in slot of axle (2.b.) But do not tighten the nuts yet!

(AR) قم بتركيب القفل في مكانه على إطار الباب وتثبيتته بالبراغي ومن ثم قم بتركيب ذراع القفل دون شد صامولة الذراع

3

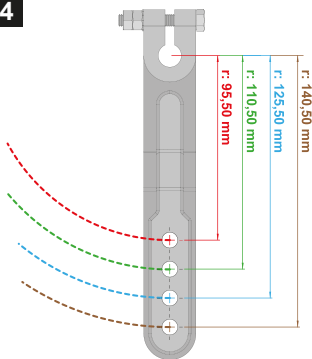


(TR) Kilit fiş kontak karşılığını kapı içerisinde yukarıda gösterildiği gibi yerleştirip vidaları sıkarak sabitleyiniz.

(ENG) Assemble the counter bridge device in to the hole and tightening screws that as described in the picture above.

(AR) قم بتركيب قطعة إتمام الدائرة الكهربائية داخل الباب وتثبيتها بالبراغي كما هو مبين في الرسم

4



(TR) Kapı açma magnetinin kilidi rahat bir şekilde açabilmesi için tekerleği kol üzerindeki en uygun deliğe takıp somunlarını sıkınız.

KAPI KİLİDİ MONTAJI | INTERLOCK ASSEMBLY |

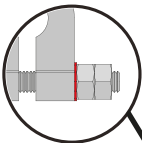
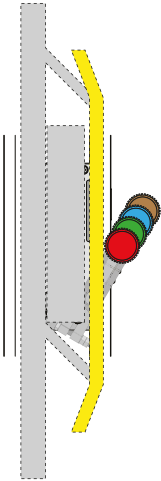
طريقة تركيب قفل الباب

(ENG) For door opening magnet activate easily the interlock please locate in hole appropriate position the wheel screw and tighten the bolt.

(AR) لتتمكن الكامنة من فتح قفل الباب بسهولة قم بتركيب العجلة في أنسب ثقب مناسب لها وإحكام شد الصامولات

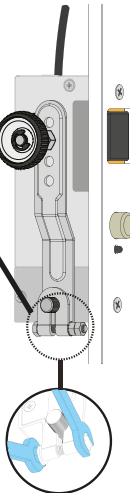
5

5.a.



Tırtıklı pul görseldeki pozisyonda olmalıdır.
Tooth washer must be mounted as image.

تأكد من وجود الرنديلة في المكان المخصص لها كما هو مبين في الرسم



(TR) Tekerlek kolunu mile sabitlemeden önce, kapı açma magnetinin kilit açma kolu çekili pozisyondayken tekerleğin pompa kilit açma koluna teğet değecek açıda ayarlayıp (5.a.) somunlarını sıkınız. (5.b.)

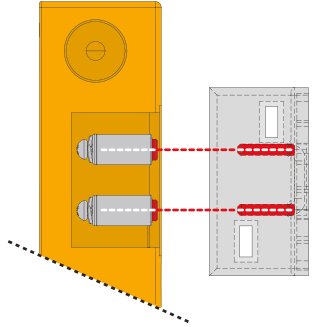
(ENG) Before tightening the roller lever to the axle, make sure that the wheel is tangent the lever of retiring cam while retiring cam locking position. (5.a.) After that tighten the bolts. (5.b.)

(AR)

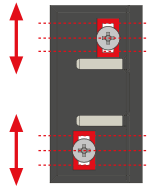
قبل تثبيت ذراع العجلة على عامود القفل إضبطة بزاوية تلامس ذراع الكامنة الخاصة بالعجلة في وضع السحب ثم قم بإحكام شد الصامولات

6

6.a.



6.b.



(TR) Kilit fiş kontağı ile kapı kanadına monte edilmiş fiş kontak karşılığının paralel bir şekilde kontaklara temas ettiğinden emin olunuz. (6.a.) Eğer fiş kontaklar paralel temas etmiyorsa kontak karşılığını

KAPI KİLİDİ MONTAJI | INTERLOCK ASSEMBLY |

طريقة تركيب قفل الباب

dikey yönde ayarlayarak paralel pozisyona getiriniz. (6.b.)

(ENG) Make sure that the interlock plug contact and the plug contact counterpart mounted on the door leaf are in parallel contact with the contacts. (6.a.) If the plug contacts do not contact in parallel, adjust the plug contact counterpart in the vertical direction and bring it to the parallel position. (6.b.)

(AR)

تأكد من أن نقاط تلامس قابس القفل والجهة المقابلة له المثبتة على إطار الباب على اتصال متوازي (أ.6) إذا لم تكن نقاط التلامس متناظرتين قم بضبط القطعة المثبتة على إطار الباب بشكل عامودي كما هو مبين في الرسم (ب.6)

GARANTİ ŞARTLARI | WARRANTY CONDITIONS |

شروط الضمان

- Kullanım kılavuzunda belirtilen esaslara, uyarılara ve standartlara uyulmak koşulu ile DELTATEK ASANSÖR markalı DK02A imalat hatalarına karşı 2 (iki) yıl DELTATEK ASANSÖR garantisindedir.
- Garanti süresi başlama tarihi ürün üzerindeki etiketin tarihidir.
- Comply with the principles, warnings and standards specified in the user manual DELTATEK ASANSÖR branded DK02A manufacturing, provided that It is under DELTATEK ELEVATOR warranty for 2 (two) years against faults.
- The warranty period starting date is the date on the label on the product.

تخضع DELTATEK ASANSÖR لضمان لمدة عامين ضد عيوب التصنيع على أن يتم الالتزام بالمبادئ والتحذيرات والمعايير المحددة في دليل المستخدم يتم تحديد تاريخ بدء فترة الضمان بختم على شهادة الضمان

İMALATÇI FİRMANIN BİLGİLERİ;

ÜNVAN: DELTATEK ASANSÖR SAN. VE TİC. LTD. ŞTİ

MERKEZ ADRES: İMES SANAYİ SİTESİ C BLOK 308 SOK.

NO: 6 YUKARI DUDULLU - ÜMRANİYE / İST. TÜRKİYE

TELEFON: + 90 216 364 30 35

ÜRÜN BİLGİLERİ;

CİNSİ: ASANSÖR YEDEK PARÇA


MARKASI: DELTATEK ASANSÖR


MODELİ; DK05




ELEKTRİK BAĞLANTISI | ELECTRICAL CONNECTION |

مخطط توصيل الكابلات الكهربائية

 Sarı / Yeşil Kablo = Topraklama
Yellow / Green Cable = Ground
كابل التأريض

 Kahverengi Kablo = Kilit Fiş Kontak
Brown Cable = Interlock Plug Contact
كابل قابس القفل

 Siyah Kablo = Kapı Fiş Kontak
Black Cable = Door Plug Contact
كابل قابس الباب

